

# **Robin Hood Chase Redevelopment Proposals**

Gill Callingham

**Area Committee East Meeting**

**19<sup>th</sup> November 2013**

# Background

- Area Regeneration
- Completion of Valley Centre
- Struggling Local Centre
- Phased approach to redevelopment
- Viability Issues



# Site Layout Plan





# Supported Living Scheme

- Asra Housing Group
- 44 one bed flats, 1 two bed flat
- Roof terrace and communal lounge
- Car parking and landscaping
- Tenancy support for 60+
- Choice Based Lettings
- Robust allocation policies

# Views and elevations



# New Retail Units

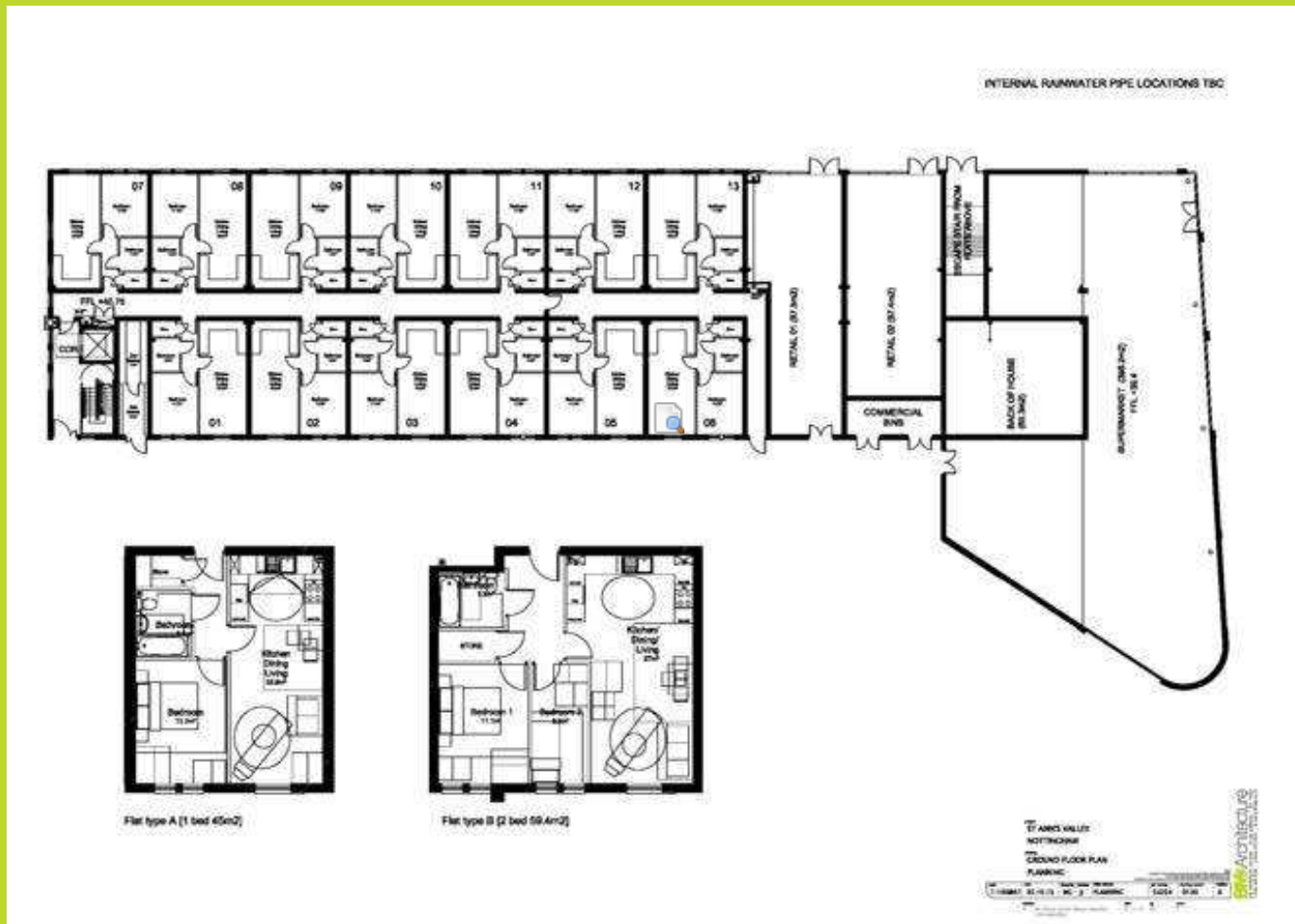
- Willmott Dixon Construction
- New supermarket
- Discussion with potential operators
- Could contain Post office or similar
- Two smaller shop units
- Frontage onto main road and Valley Centre
- Car parking, servicing and landscaping

# Views of Retail Units





# Ground floor layout



# New Public Square

- Previous consultation
- Community Focus
- Improve access to Chase Neighbourhood Centre
- Design workshops
- Possibilities for play, events, markets etc . .

# Consultation

- 2009, 2011, 2012 and current
- You said – we did
- Events at Valley Centre and the Chase
- Local Issues and Area Committee
- SATRA central support
- 91% agree with proposals
- Further design workshops for public square

# Timescales

Approval at Council's Executive	July 2013
Planning Application	November 2013
Finalise developer agreement	December 2013
Final approval	December 2013
Demolish health centre and first block	January 2014
Start on site	March 2014
Demolish second block	Jan/Feb 2015
Complete Older Persons' scheme	March 2015
Complete retail and Public Square	Sept 2015